

PARTS LIST

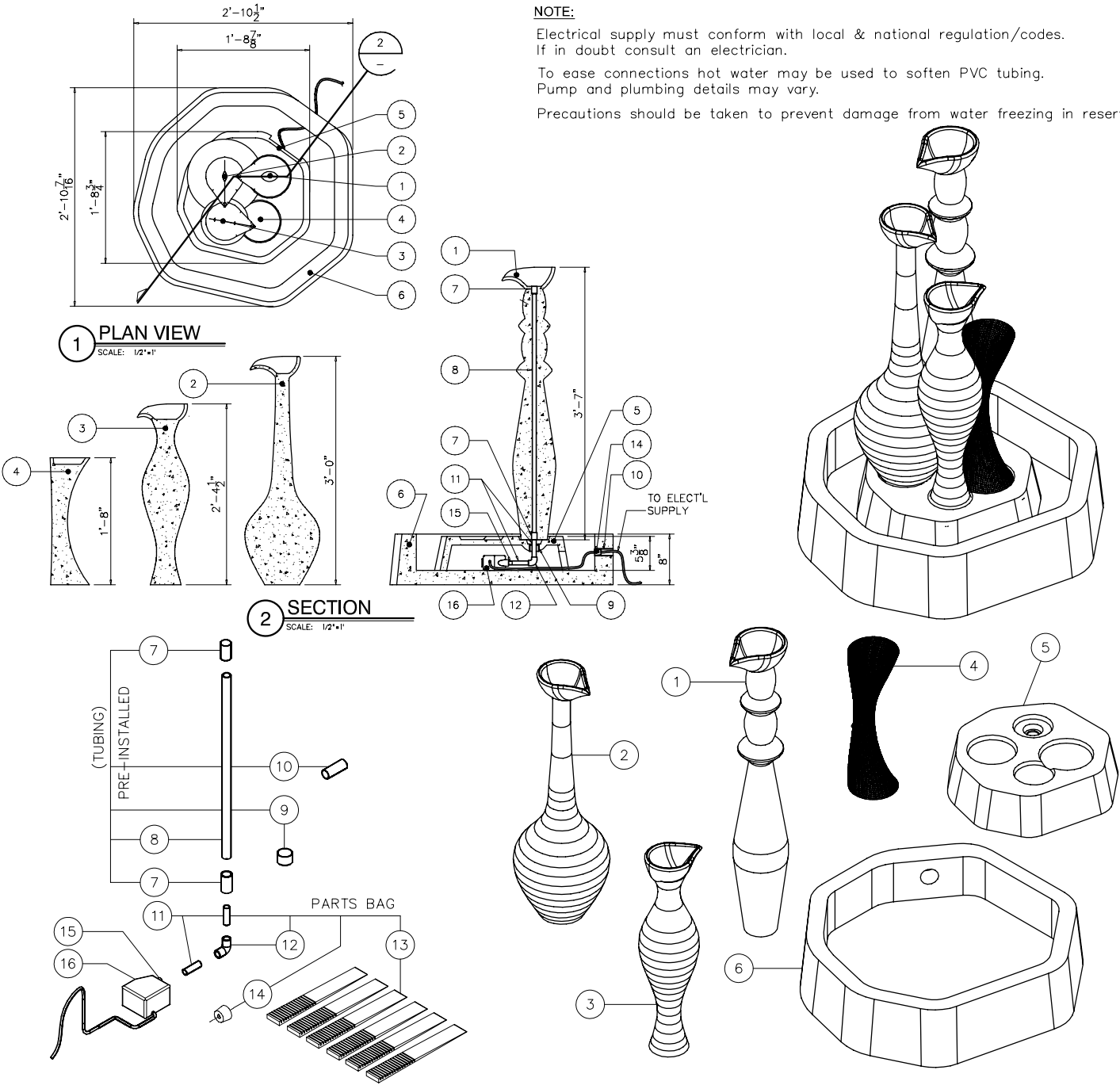
ITEM NO	COMPONENT	PART NO.	DESCRIPTION	MANUFACTURER	QTY	REMARKS
1	FOUNTAIN	-	43"H SPINDLE GFRC	TREVI	1	COLOR OPTIONAL
2		-	36"H SPINDLE GFRC	TREVI	1	COLOR OPTIONAL
3		-	28-1/2"H SPINDLE GFRC	TREVI	1	COLOR OPTIONAL
4		-	20"H SPINDLE GFRC	TREVI	1	COLOR OPTIONAL
5		-	1'-8 3/4"W x 1'-8 3/8"L x 5 3/8"D SUB-BASE - GFRC	TREVI	1	COLOR OPTIONAL
6		-	2'-10"W x 2'-10"L x 8"D BASE - GFRC	TREVI	1	COLOR OPTIONAL
7	TUBING	-	1/2" DIA CPVC COUPLER SOCKET END	-	2	PRE-INSTALLED
8		-	1/2" DIA x 3'-4"LG CPVC PIPE PLAIN END	-	1	PRE-INSTALLED
9		-	1-1/2" DIA x 1"LG CPVC PIPE CLEEVE PLAIN END	-	1	PRE-INSTALLED
10		-	1-1/4" DIA x 2" LG SCH 200 CPVC PIPE SLEEVE PLAIN END	-	1	PRE-INSTALLED
11	PARTS BAG	A103	1/2" I.D. x 12" LG HOSE TAIL - CLEAR VINYL PLAIN END	-	1	
12		A103	1/2" I.D. 90° ELBOW CPVC SOCKET END	-	1	
13		A103	SHIM PLASTIC	EZ - SHIM	6	
14		A103	1-3/4" RUBBER PLUG	TREVI	1	
15	PUMP	-	1" x 1/2" DIA ADAPTER THREADED	JEAN TECH INC.	1	
16		-	WT300, 190 GPH SUBMERSIBLE PUMP	JEAN TECH INC.	1	

NOTE:

Electrical supply must conform with local & national regulation/codes. If in doubt consult an electrician.

To ease connections hot water may be used to soften PVC tubing. Pump and plumbing details may vary.

Precautions should be taken to prevent damage from water freezing in reservoir.



SPNF-SHOP.DWG